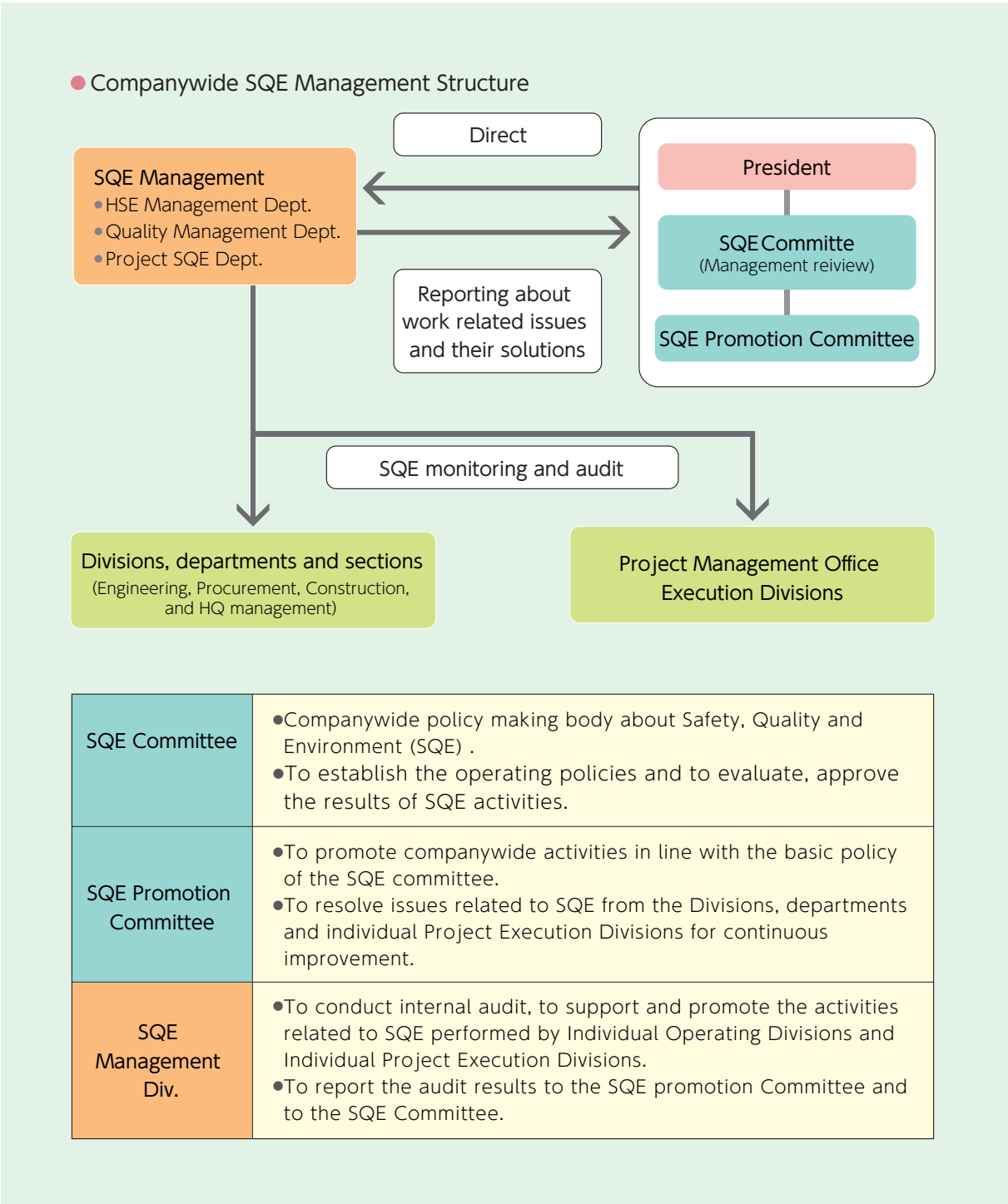


# SQE Management Promotion Structure

## Safety, Quality and Environment (SQE) Management Structure

Within TOYO, SQE Committee is axially linked to its business operations. SQE Promotion Committee and SQE Management Division cooperate with each other facilitating inter-department as well as every project related Safety, Quality and Environment monitoring audit, conducting PDCA (Plan-Do-Check-Action) cycle and in the process continuously improving the business operations.





Meeting of SQE Committee for Corporate SQE management

## ■ ISO Certification

Toyo-Japan, in March 1994, acquired Quality Management Standard ISO 9001:1987 certification. Considering Standard upgrade, ISO 9001:2008 certification has been renewed.

In October 2004, Toyo-Japan obtained Environment Management Standard ISO14001:1996 certification. Considering Standard upgrade, ISO 14001:2004 certification has been renewed.

Similarly, in March 2006, Toyo-Japan obtained Information Security Management Standard BS7799 certification. Considering Standard upgrade, ISO/IEC27001: 2005 certification has been renewed.



ISO 9001 Certificate of Approval



ISO 14001 Certificate of Approval



ISO/IEC 27001 Certificate of Approval