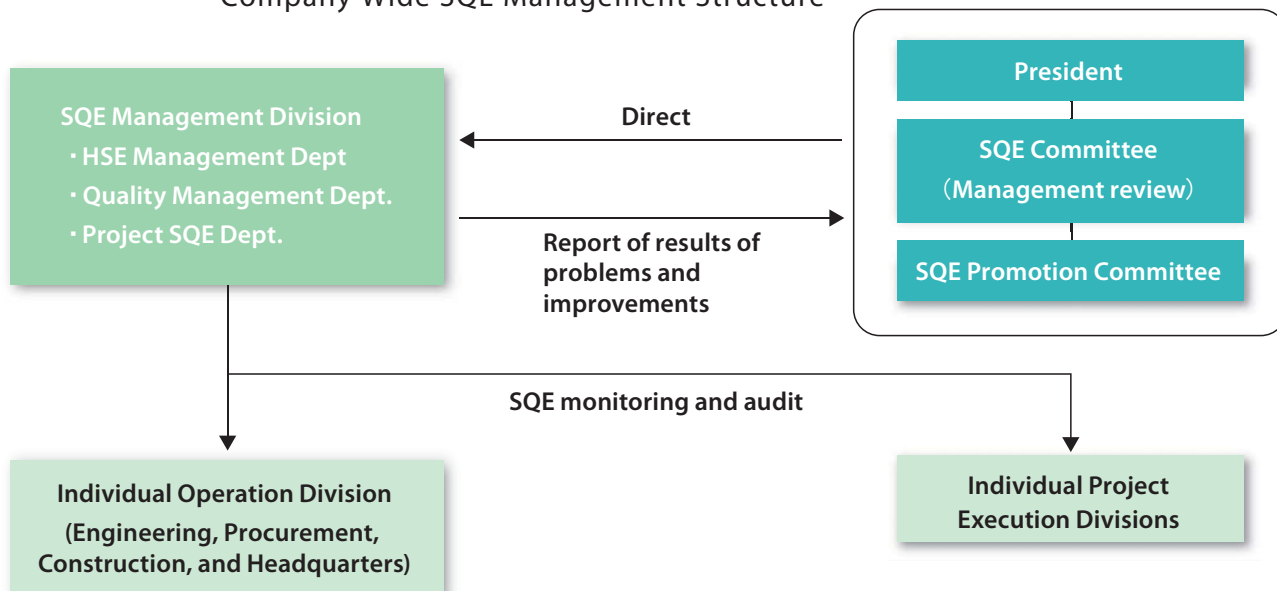


# SQE Management Promotion Structure

## • • • Safety, Quality, and Environment (SQE) Management Structure • • •

In Toyo, the axis of SQE Committee is directly connected to the management, through co-operation of SQE Promotion Committee. SQE Management Division systematically implements the Plan-Do-Check-Act (PDCA) cycle upon the Individual Operating Divisions and Individual Project Execution Divisions for continual improvement of the SQE management system and performance.

### Company Wide SQE Management Structure



<b>SQE Committee</b>	To review companywide SQE management activities reporting directly to the President, and to establish the operating policies and assess and approve the results of SQE activities.
<b>SQE promotion Committee</b>	To promote companywide activities in line with the basic policy of the SQE committee, and also to promote specific SQE activities of Individual Operating Divisions and Individual Project Execution Divisions.
<b>SQE Management Div.</b>	To monitor the SQE activities performed by Individual Operating Divisions and Individual Project Execution Divisions and by conducting internal audits, to support and promote the activities. To report the audit results to the SQE Promotion Committee and to the SQE Committee

## • • • ISO Approval • • •

Toyo, in March 1994, acquired Quality Management Standard ISO 9001:1987 certification from the United Kingdom Accreditation Service (UKAS) and the Japan Accreditation Board for Conformity Assessment (JAB). After that year and now, Toyo passed the Transition Assessment for ISO 9001:2008.



ISO 9001 Certificate of Approval

In October 2004, Toyo obtained Environmental Management Standard ISO 14001:1996 certification, which covers the Head Office and domestic construction sites. After that year and now, Toyo passed the Renewal Assessment for ISO 14001:2004.



ISO 14001 Certificate of Approval

Toyo, in March 2006, obtained the BS 7799 Certificate of Approval for the Information Security Management System. After that year and now, Toyo passed the Renewal Assessment for ISO/IEC 27001:2005.

In activities not related to ISO certification, Toyo follows OHSAS 18001, an international occupational health and safety management system specification.

## • • • SQE Education • • •

Toyo's SQE education includes "TEC Special Course: HSSE and Quality Management" held regularly and "Internal Safety, Quality and Environmental Auditor Training Course," in addition to in-house education for each of Safety, Quality, and the Environment. All employees are obliged to attend the in-house education. In addition, project HSE manager and project quality manager who control and manage project HSE and Quality are educated and trained.

### ■ TEC Special Course: HSSE and Quality Management

TEC Special Courses cover a wide range of engineering and management fields for the purpose of "promptly educating young employees as professionals" and "complementing intra-division education and extending peripheral knowledge" by in-house instructors. "HSSE and Quality Management" has been added to the series of TEC Special Courses to implement education on Safety, Quality, and the Environment.

### ■ Internal Quality and Environmental Auditor Training Course

Selected candidates for internal Quality and Environmental auditors are trained by an external auditor in training institute.

### ■ Education and Development of Manager for Project SQE

Due to the needs of project HSSE manager and project quality manager, special department is set up to educate and train selected candidates in-house and in external institute. So that they qualify to take up the responsibility.