

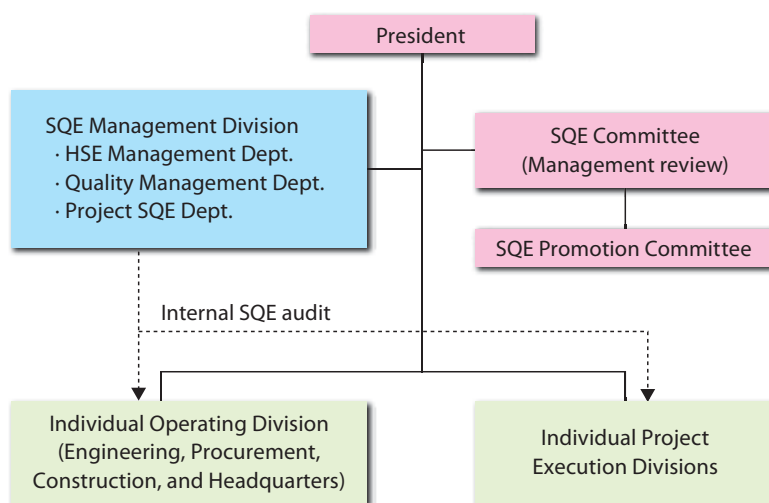
• • • Safety, Quality, and Environment (SQE) Management Structure • • •

Toyo has set up the SQE Committee, which reports directly to the President, to review companywide SQE management activities. The Committee establishes the operating policies and assesses and approves the results of SQE activities.

The SQE Promotion Committee promotes companywide activities in line with the basic policy of the SQE Committee, and also promotes specific SQE activities of Individual Operating Divisions and Individual Project Execution Divisions.

The SQE Management Division monitors the SQE activities performed by Individual Operating Divisions and Individual Project Execution Divisions, conducts internal SQE audits and reports the audit results to the SQE Promotion Committee and the SQE Committee.

The SQE Promotion Committee and the SQE Management Division cooperate systematically on the axis of SQE Committee, which is connected directly to the management, to implement the Plan-Do-Check-Act (PDCA) cycle of the Individual Operating Divisions and Individual Project Execution Divisions for continual improvement of the SQE management system and performance.



company wide SQE management structure

• • • ISO Approval and Internal Audit • • •

■ ISO approval

In March 1994, Toyo acquired Quality Management Standard ISO 9001:1987 certification from the United Kingdom Accreditation Service (UKAS) and the Japan Accreditation Board for Conformity Assessment (JAB) after surveillance by Lloyd's Register Quality Assurance (LRQA). In March 2009, Toyo passed the Renewal Assessment for ISO 9001:2000. In March 2010, Toyo passed the Transition Assessment for ISO 9001:2008.

In October 2004, Toyo obtained Environmental Management Standard ISO 14001:1996 certification, which covers the Head Office and domestic construction sites. The certification was given by UKAS and JAB. In March 2009, Toyo passed the Renewal Assessment for ISO 14001:2004.



Closing meeting of LRQA's surveillance



ISO 9001 Certificate of Approval



ISO 14001 Certificate of Approval

LRQA's surveillance is carried out simultaneously for the above two standards once a year (in February) since 2010. Toyo takes corrective actions following LRQA's recommendations so as to continually improve Toyo's quality and environmental management systems and performance.

In March 2006, Toyo obtained the BS 7799 Certificate of Approval for the Information Security Management System with LRQA as the certification body. In March 2009, Toyo passed the first Renewal Assessment for ISO/IEC 27001:2005.

In activities not related to ISO certification, Toyo follows OHSAS 18001, an international occupational health and safety management system specification.

■ Internal audit

In order to make sure that Toyo's Quality and Environmental Management is effectively carried out, internal audit at Head Office is conducted by internal auditors simultaneously for Quality and Environment. The audits aim to be useful for Corporate Management, contributing to enhancing the Corporate value.

Environmental audits on sites are performed partially along with safety audits.

● ● ● SQE Education ● ● ●

Toyo's SQE education includes "TEC Special Course: Quality and HSSE Management" held regularly and "Internal Safety, Quality and Environmental Auditor Training Course," in addition to in-house education for safety, quality, and the environment.

All employees are obliged to attend in-house education. Special education by outside instructors is also carried out as required.

■ "TEC Special Course: Quality and HSSE Management"

TEC Special Courses cover a wide range of engineering and management fields for the purpose of "promptly educating young employees as professionals" and "complementing intra-division education and extending peripheral knowledge" by in-house instructors. "Quality and HSSE Management" has been added to the series of TEC Special Courses to implement education on Safety, Quality, and the Environment.

■ Internal, Quality and Environmental Auditor Training Course

Selected candidates for internal, Quality and Environmental Auditors are educated by an external auditor training institute.