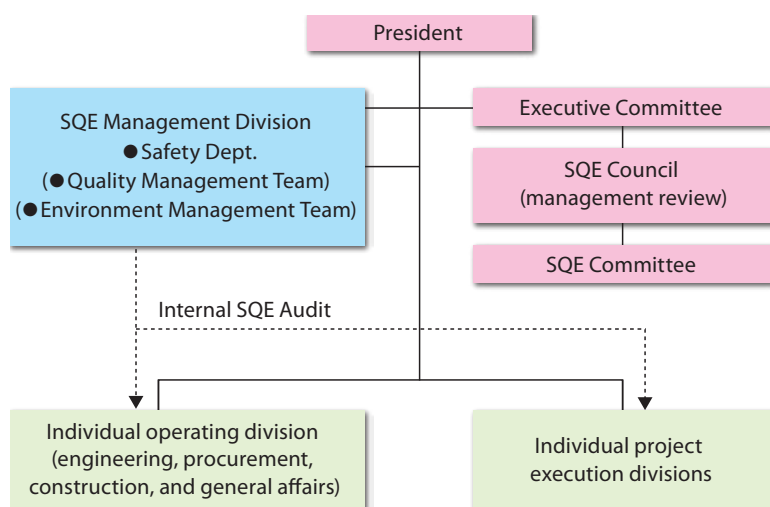


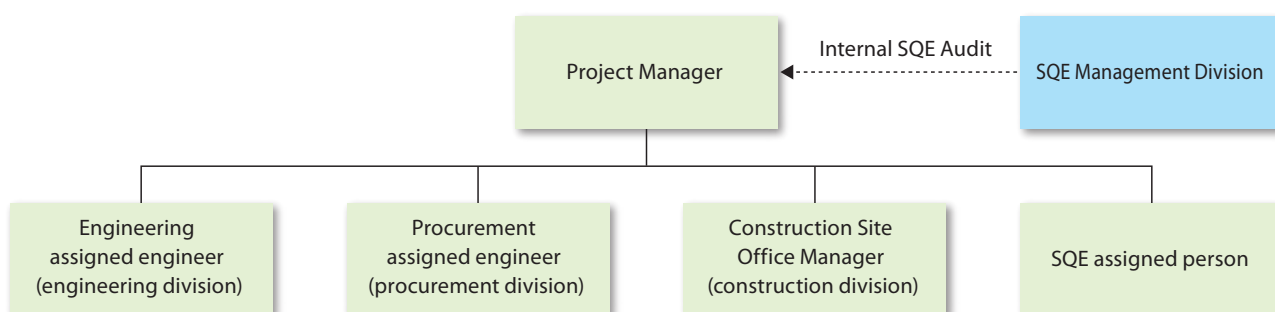
Companywide Safety, Quality, and Environment (SQE) Management Structure

TOYO's companywide SQE management structure is illustrated here. The SQE Council, reporting directly to the President, establishes companywide SQE management operating policies, and assesses and approves general SQE activities. The SQE Committee promotes companywide activities in line with the basic policy of the SQE Council. The SQE Management Division performs Internal SQE Audit and reports the results to SQE Committee and SQE Council.



Individual Project SQE Management Structure

SQE management structure and effects for an each individual project are maintained and improved through continual monitoring by the SQE engineer of each project over engineering, procurement, and construction divisions, and also by through the internal audit SQE Management Division.



ISO Approval and Internal Audit

■ ISO approval

In March 1994, TOYO acquired Quality Management Standard ISO 9001:1987 certificate from the United Kingdom Accreditation Service (UKAS) and the Japan Accreditation Board for Conformity Assessment (JAB) after the surveillance by Lloyd's Register Quality Assurance (LRQA). In April 2006, TOYO passed the fourth Renewal Assessment for ISO 9001:2000.

In October 2004, TOYO obtained Environmental Management Standard ISO 14001:1996 certification that covers the Head Office and construction sites within Japan. The certification was given by the United Kingdom Accreditation Service (UKAS) and the Japan



ISO 9001 Certificate of Approval



ISO 14001 Certificate of Approval

Accreditation Board for Conformity Assessment (JAB) after the surveillance by the Lloyd's Register Quality Assurance (LRQA) as the certification body. In October 2007, TOYO passed the first Renewal Assessment for ISO 14001:2004.

LRQA's surveillance is carried out twice (March and September) a year, simultaneously for the above two standards. TOYO takes corrective actions following LRQA's comments so as to continuously improve TOYO's quality and environment management systems and performance.

Other than ISO certification, TOYO is making preparations for conducting OHSAS 18001, an international occupational health and safety management system specification.

■ Internal audit

In order to make sure that TOYO's quality and environment management is effectively carried out, internal audit is conducted regularly for quality and environment simultaneously. The audit aims to be useful for corporate management, contributing to enhancing the corporate value.

Safety audit on sites is also performed regularly along with environment audit.



Closing meeting of LRQA's surveillance



Internal audit

Audit is performed by two auditors at the audited department office.

SQE Education

TOYO's SQE education includes "TEC Special Course: Quality and HSSE Management" held regularly and "Internal Quality and Environment Auditor Training Course." Special education by outside instructors is also carried out as required.

■ "TEC Special Course: Quality and HSSE Management"

TEC Special Courses are held covering a wide range of engineering and management fields for the purpose of "promptly educating young employees as professionals" and "complementing intra-division education and extending peripheral knowledge" by in-house instructor. "Quality and HSSE Management" has been added to the series of TEC Special Courses to implement education on safety, quality, and environment.

■ Internal Quality and Environment Auditor Training Course

Selected candidates for Internal Quality and Environment Auditors are educated by an external auditor training institute.